

Parkstad Limburg EnergyTransition (PALET)



**ZU
YD**

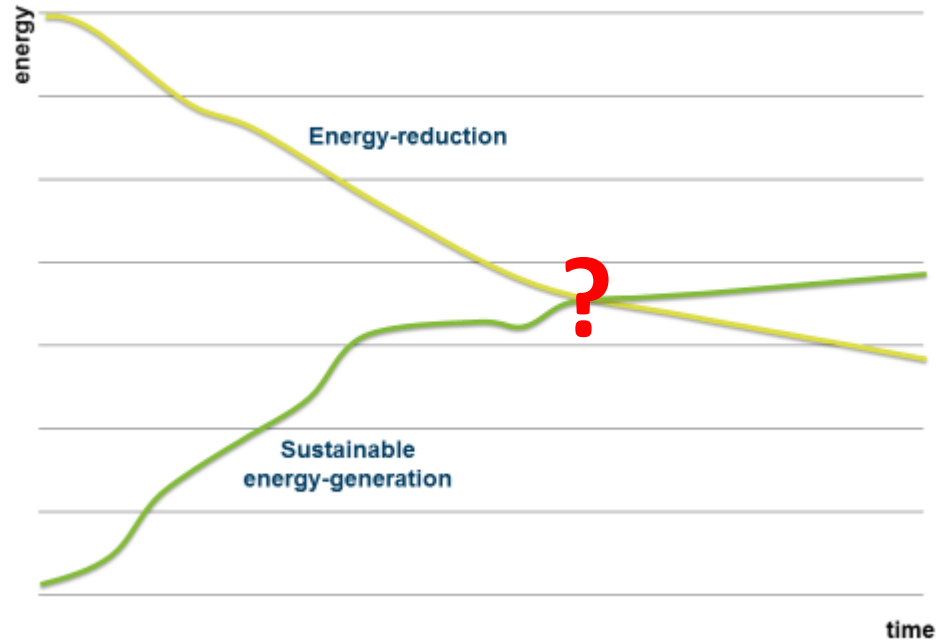
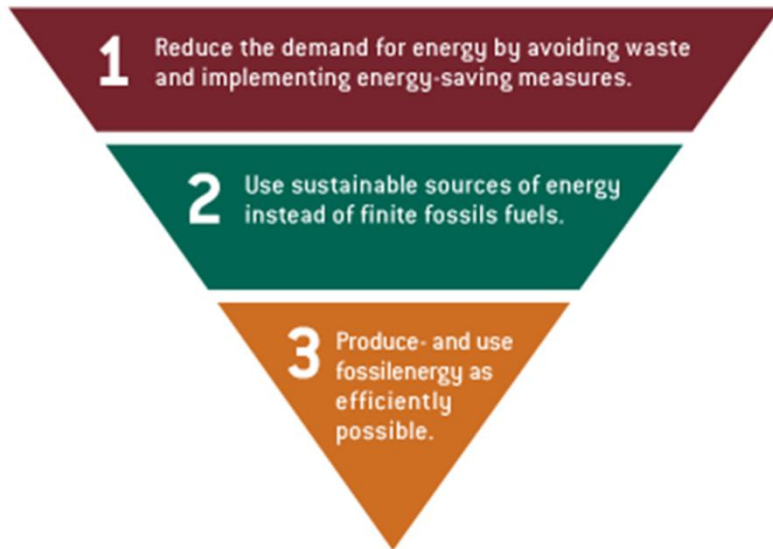


WAGENINGENUR
For quality of life

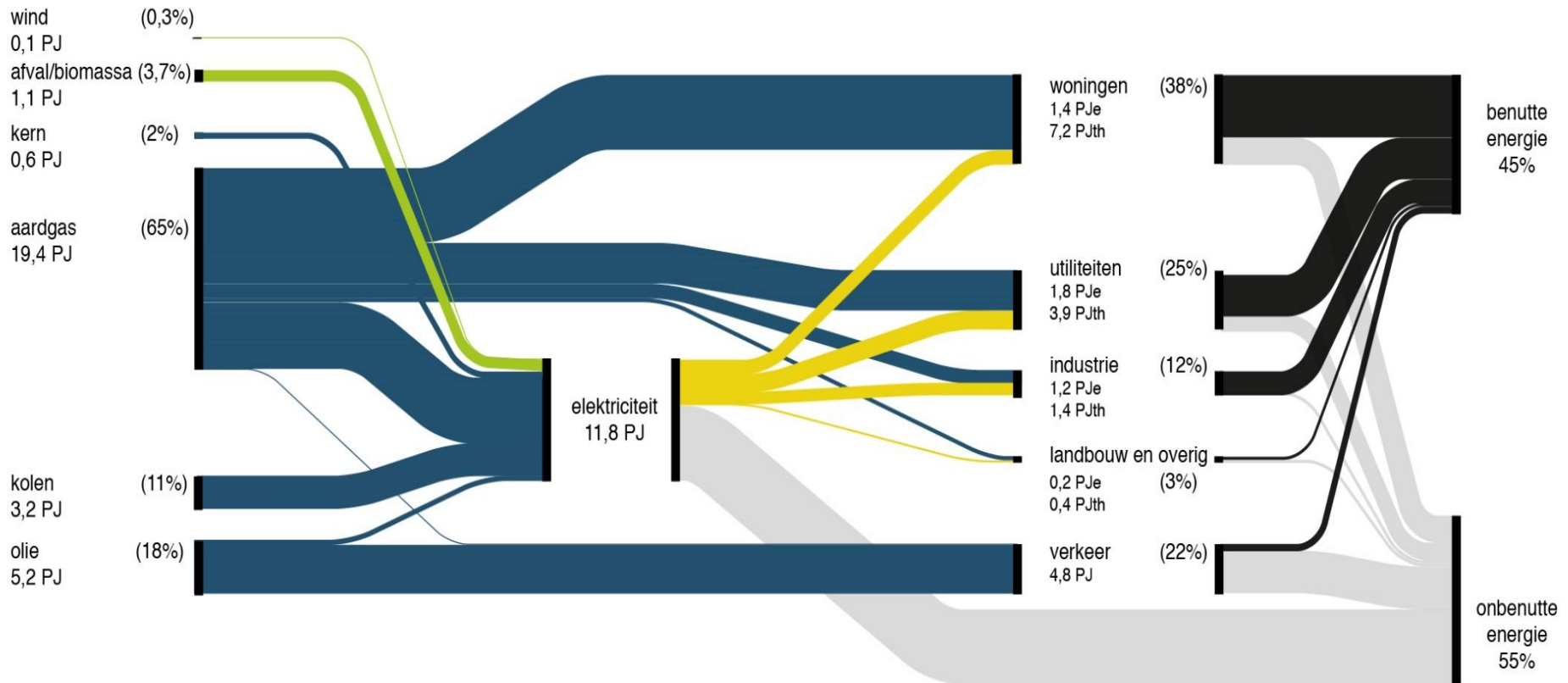


?

The Trias Energetica concept:
the most sustainable energy is saved energy.

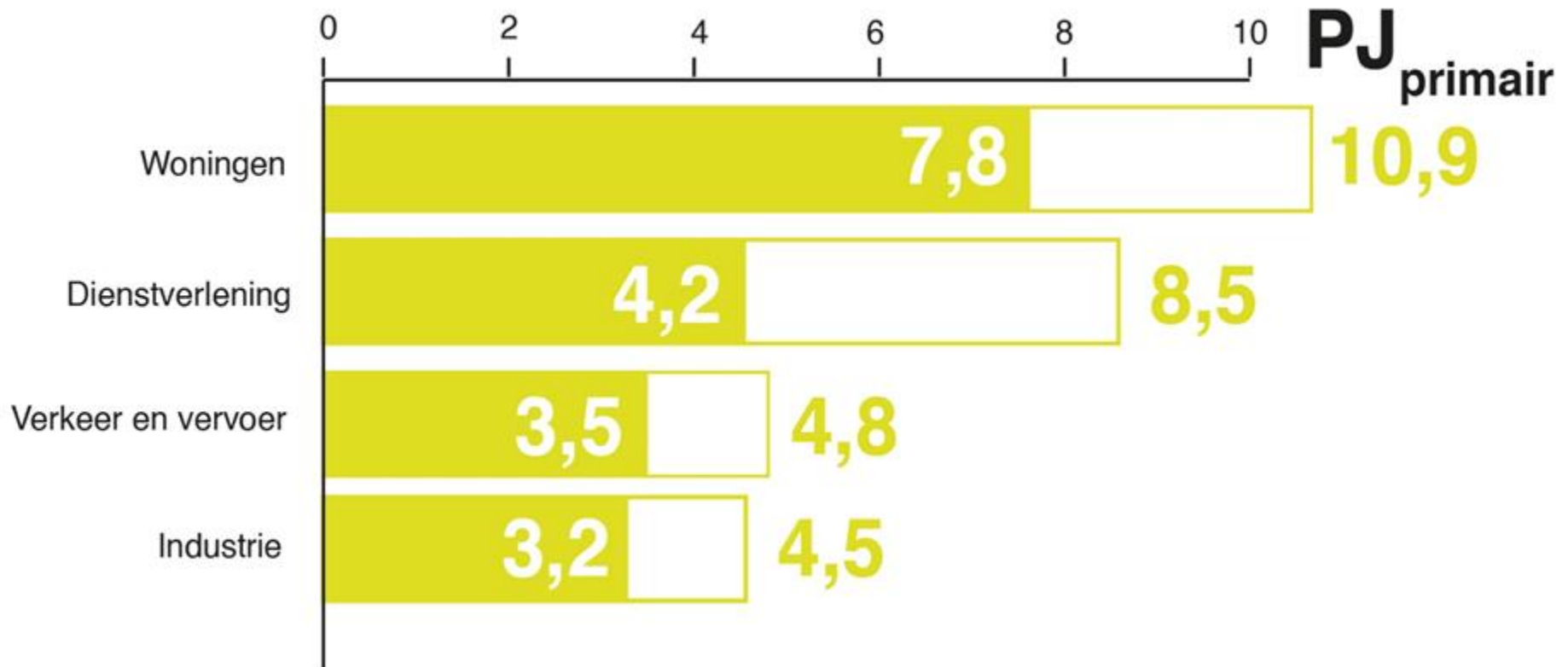


2011 Parkstad *Huidige energiemix (29,6 PJ)*

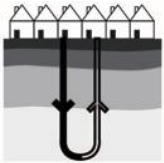
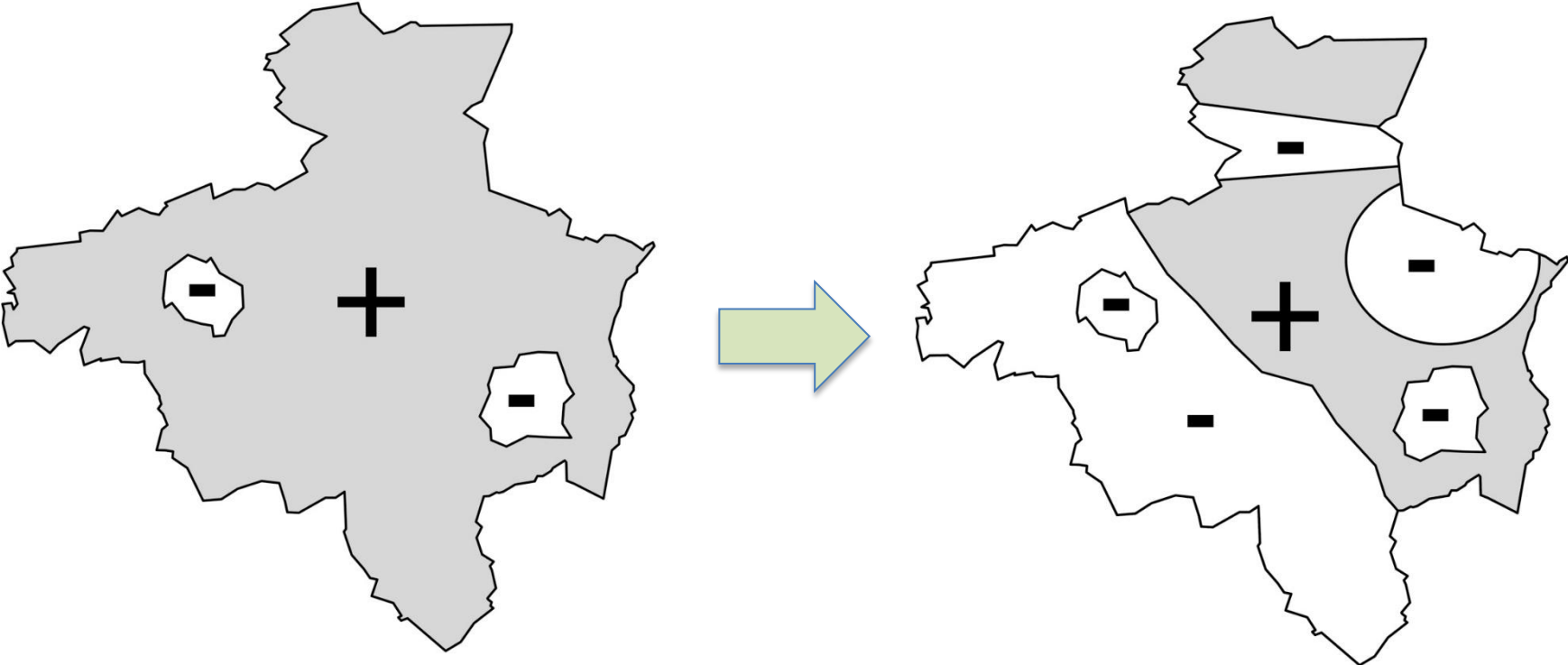


500 million euro a year!
98% leaves the region!

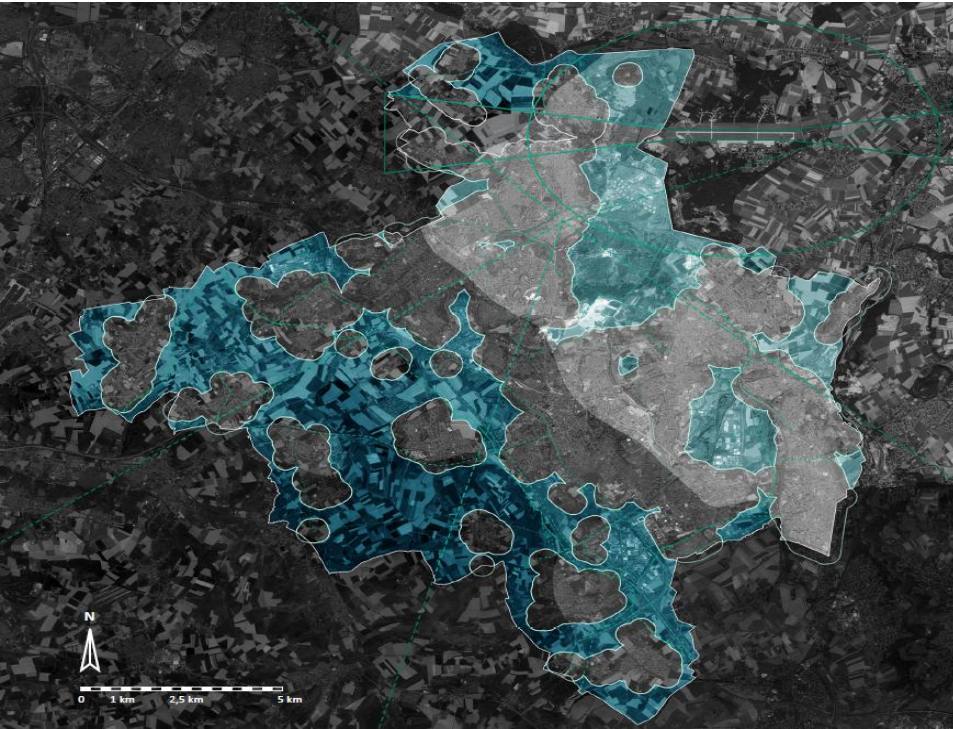
Energy-reduction: 10,1 PJ (33%)



FROM TECHNICAL TO REALISTIC SCENARIO



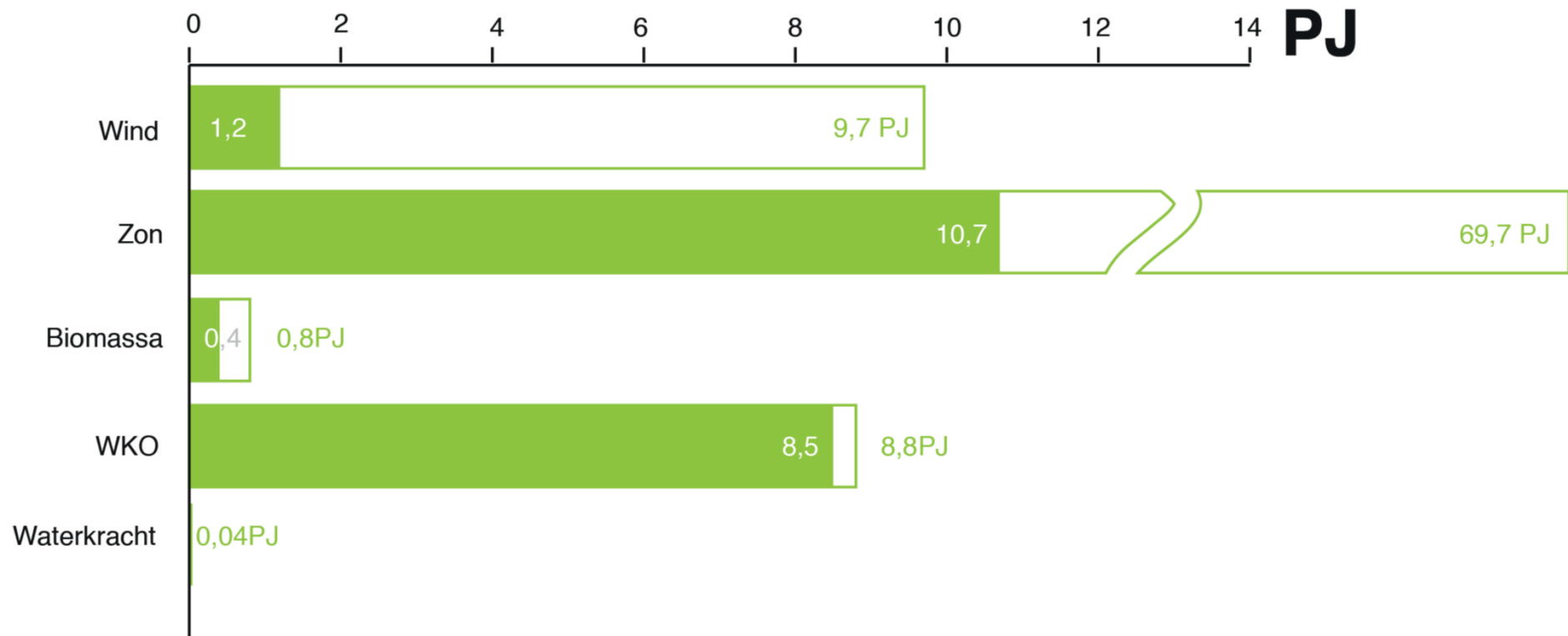
TECHNICAL



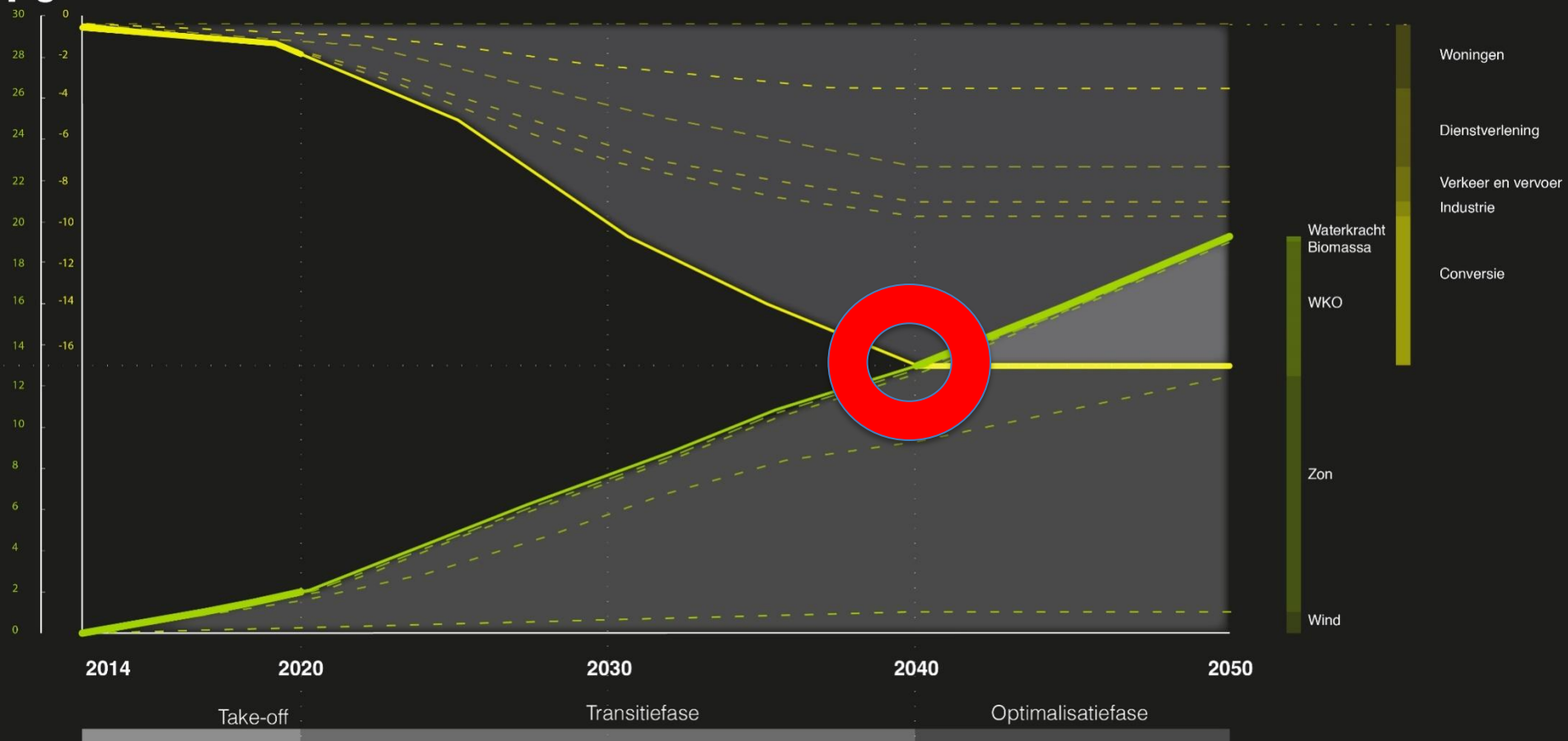
REALISTIC



Sustainable energy-generation: 20,8 PJ



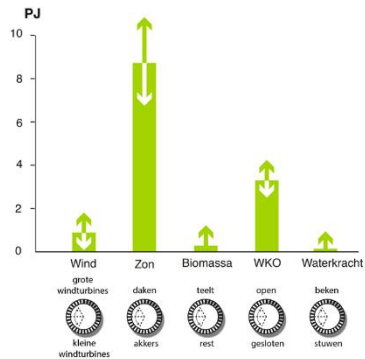
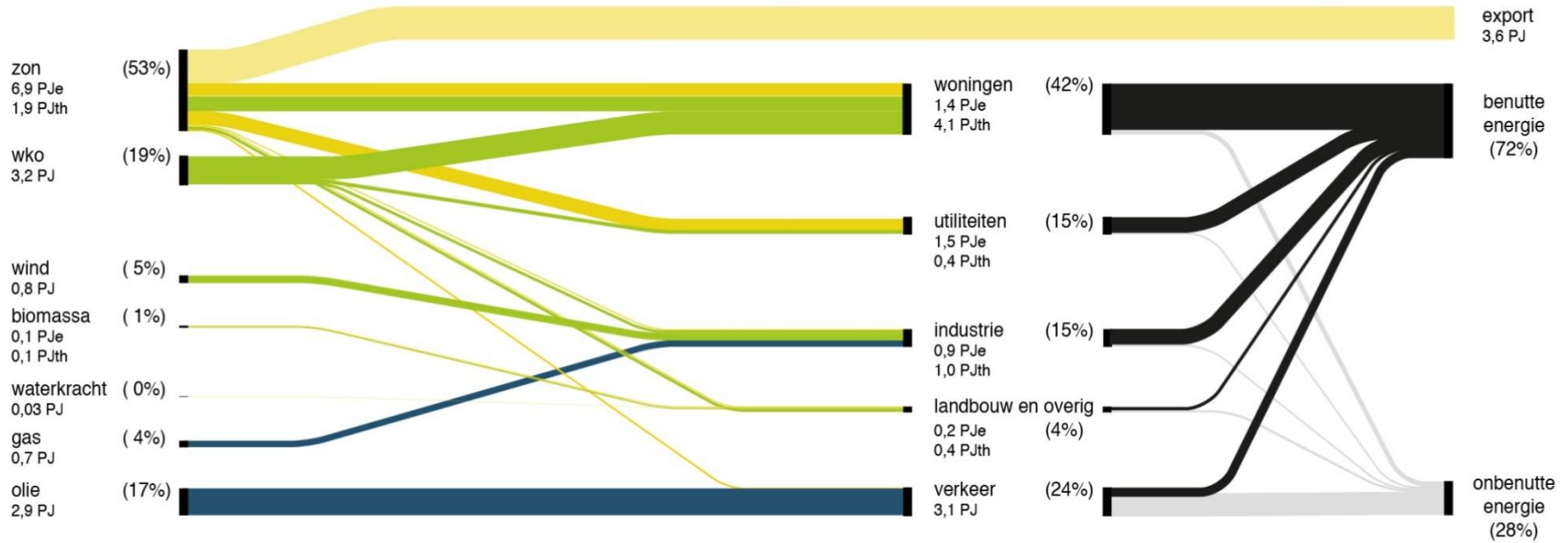
PJ



Ambitiegrafiek Energietransitie Parkstad Limburg

2040 Parkstad *Voorbeeld van een mogelijke energiemix (13 PJ)*

13,0 PJ




PALET 1.0 ... and... 2.0




In 2040 kan dit in Landgraaf duurzaam opgewekt worden:

2467 ha oppervlak


12% van ha oppervlak Parkstad Limburg




Samenvatting potentie	Totaal		Woningen		Publieke dienstverlening		Commerciële dienstverlening, industrie en energie		Infrastructuur, verkeer en vervoer		Overig (o.a. landbouw)	
	ha	TJ	ha	TJ	ha	TJ	ha	TJ	ha	TJ	ha	TJ
<i>Toepassing</i>												
⚡ PV	65.6	557	36.3	308.5	3.0	25.7	20.0	169.8	6.2	52.9		
⚡ PV grondgebonden	102.7	872					46.5	394.4			56.2	477.1
🔥 Zonnecollectoren	6.4	109	6.4	109.1								
🔥 Asfaltcollectoren	27.6	258							27.6	258.3		
Totaal ZON	202.3	1796	42.8	418	3.0	26	66.5	564	33.9	311	56.2	477



Samenvatting potentie	Totaal		Woningen		Publieke dienstverlening		Commerciële dienstverlening, industrie en energie		Infrastructuur, verkeer en vervoer		Overig (o.a. landbouw)	
	#	TJ	#	TJ	#	TJ	#	TJ	#	TJ	#	TJ
<i>Toepassing</i>												
⚡ Windturbines (3MW)	19.5	316	n.v.t.	n.v.t.	0	0	3	49	n.v.t.	n.v.t.	16.5	268
⚡ Gebouwwgebonden windturbines	930	4	738	2.99	25	0.10	167	0.68	n.v.t.	n.v.t.	n.v.t.	n.v.t.
Totaal WIND		320		3		0		49		0		268



Samenvatting potentie	Totaal		Woningen		Publieke dienstverlening		Commerciële dienstverlening, industrie en energie		Infrastructuur, verkeer en vervoer		Overig (o.a. landbouw)	
	ha	TJ	ha	TJ	ha	TJ	ha	TJ	ha	TJ	ha	TJ
<i>Toepassing</i>												
🔥 Open/gesloten systeem	576	624	471.3	510.6	22.4	24.3	82.7	89.6	n.v.t.	n.v.t.	n.v.t.	n.v.t.
🔥 Bodemwarmtewisselaar	576	660	471.3	539.6	22.4	25.6	82.7	94.7	n.v.t.	n.v.t.	n.v.t.	n.v.t.
Totaal WKO	1153	1284	942.6	1050.2	44.8	49.9	165.4	184.2	0	0	0	0



Samenvatting potentie	Totaal		Woningen		Publieke dienstverlening		Commerciële dienstverlening, industrie en energie		Infrastructuur, verkeer en vervoer		Overig (o.a. landbouw)	
	ton	TJ	ton	TJ	ton	TJ	ton	TJ	ton	TJ	ton	TJ
<i>Toepassing</i>												
stortplaatsgas	n.v.t.	24.0					n.v.t.	24.0				
mest	5690	5.2									5690	5.2
bermmaaisel	210	1.1							210	1.1		
houtige biomassa	1157	13.2			1157	13.2						
stro	868	13.0									868	13.0
snoeihout	87	6.7	87	6.7								
GFT	2794	1.7	2794	1.7								
Totaal BIOMASSA	10806	65	2881	8	1157	13	0	24	210	1	6558	18

TOTAAL (TJ)	3465	1479	89	822	312	763
--------------------	-------------	-------------	-----------	------------	------------	------------



Gemeente Onderbanken

voerendaal Heerlen

gemeente **Brunssum**

Gemeente **Landgraaf**

GEMEENTE

Nuth

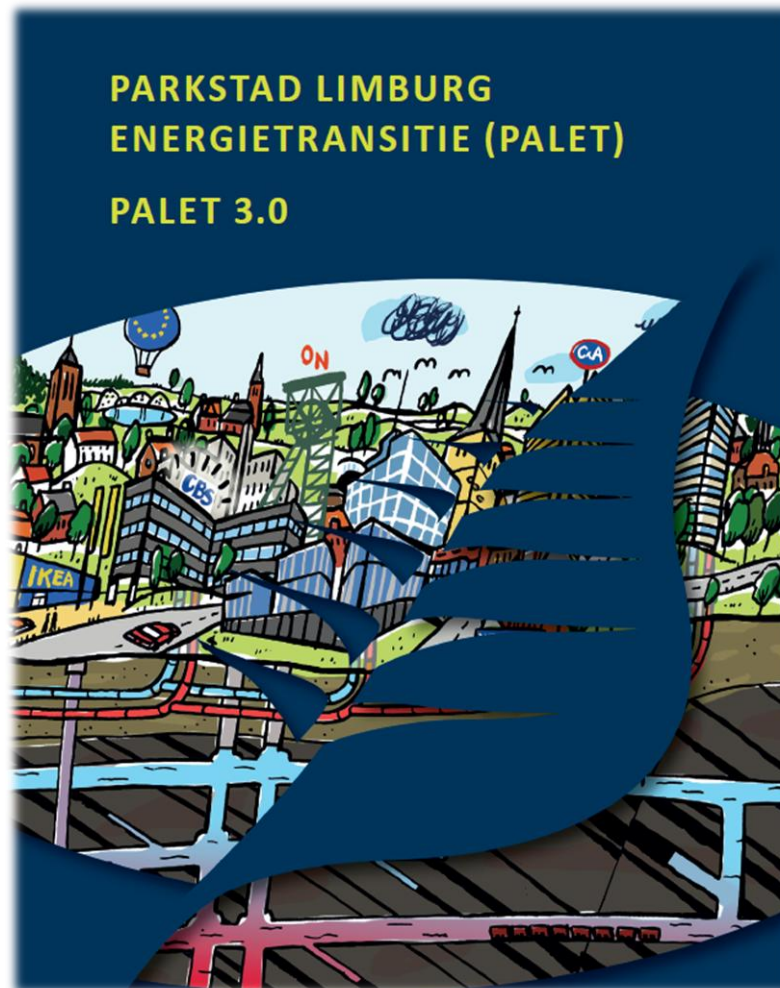
gemeente **Simpelveld**

Gemeente **Kerkrade**

parkstad
stadswegio **limburg**

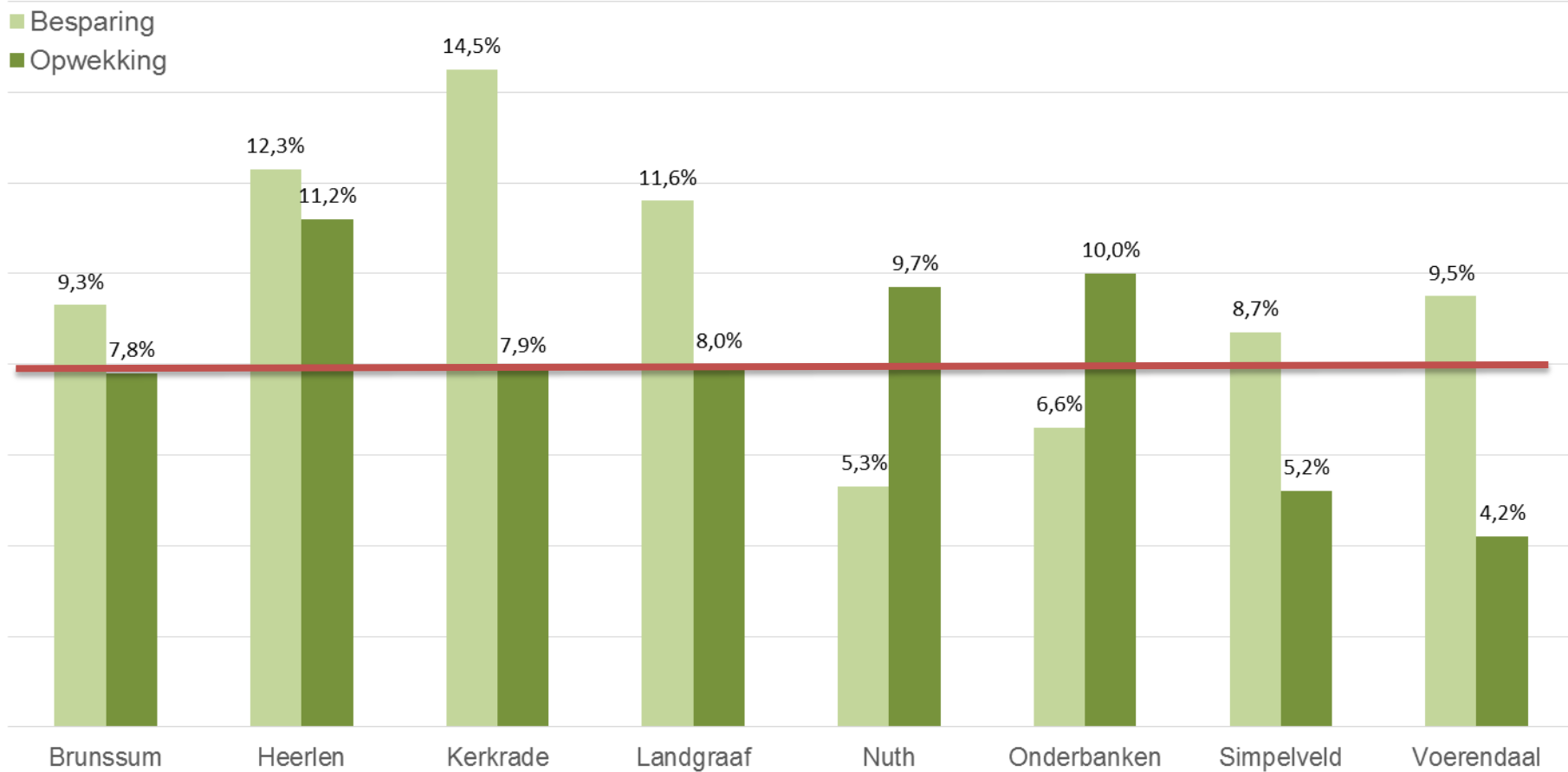
Implementation Programme 2016-2020

PALET 3.0









Energy-reduction:
Energy-generation:

10,9 %
8,3 %



Open Universiteit



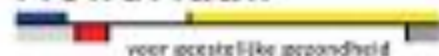
provincie limburg



ENEXIS

Buurkracht'

Mondriaan



voor gezamenlijke grondheid

ZU
YD



Vereniging van
Nederlandse Gemeenten

Rabobank

Parkstad Limburg



urgenda
samen sneller duurzaam

SEER



L·V·O

Limburgs
Voortgezet
Onderwijs

het dichtst bij huis

ARCUS

Stichting voor Katholiek onderwijs



Ondernemend
Parkstad
Limburg

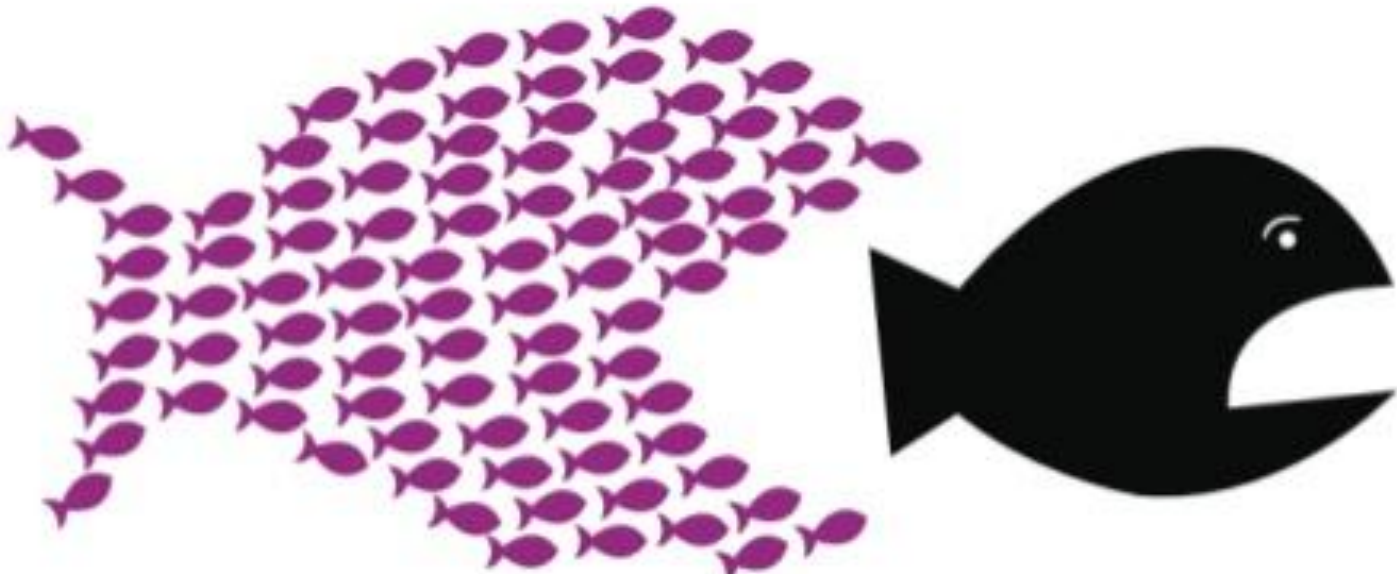


movare



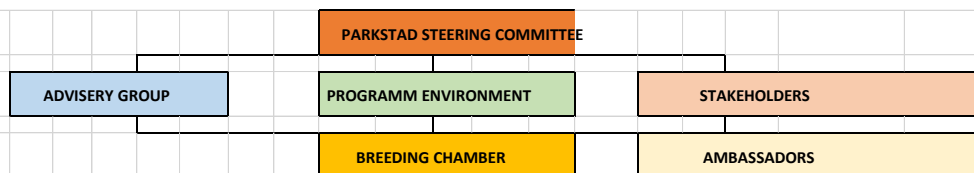
parkstad
stadsweglio limburg

THE BIGGEST CHALLENGE FOR PARKSTAD LIMBURG



TOGETHER WE ARE BIGGER

IMPLEMENTATION PROGRAMME PARKSTAD LIMBURG ENERGY TRANSITION 2016-2020



		RESULT	€ IN MLN
Private Housing	Pilot Landgraaf (and multiplying)	2500 houses	19
	Pilot municipality Nuth (and multiplying)		
	Condominiums	1000 houses	16
Wonen Huur	Solarpanel Project Parkstad (private housing)	7.250 houses	44
	PALET Social Housing	label d --> b	250
Public Service	Schools	30-40	6
	Public LED-lightning	25.000 pieces	3
	Health Care Institutions	to be classified	
Commercial Service	Sustainability Public Real Estate	to be classified	15
	Solar panels on business roofs	37 ha	79
	Energiebesparing bedrijven	to be classified	
Traffic and Transport	E-mobility	to be classified	
Territorial Measures	Planning Framework/Policy		
	Wind Policy/Plan		77
	District Heating and Cooling Policy/Plan		
	Solarfields	33 ha	56
	Minewater Project (DHC)	11.330 houses	170
Communication & Marketing	Campaign		
Organisation & Financing	Regional Energy Company		
	Acquistition EU-funds		
	Innovative Financial Instruments		
Monitoring	Quantitative: new Baseline Study in 2020		
	Qualitative: Progress Control in Breeding Chamber and Report in 2020		
Total Invest			734

8 Municipality Organisations