


# Key Note:

# WSW Wuppertaler Stadtwerke

## an example of German Stadtwerke

Nagano, 7th September 2017  
Head of Strategy and Development  
WSW Energie & Wasser AG

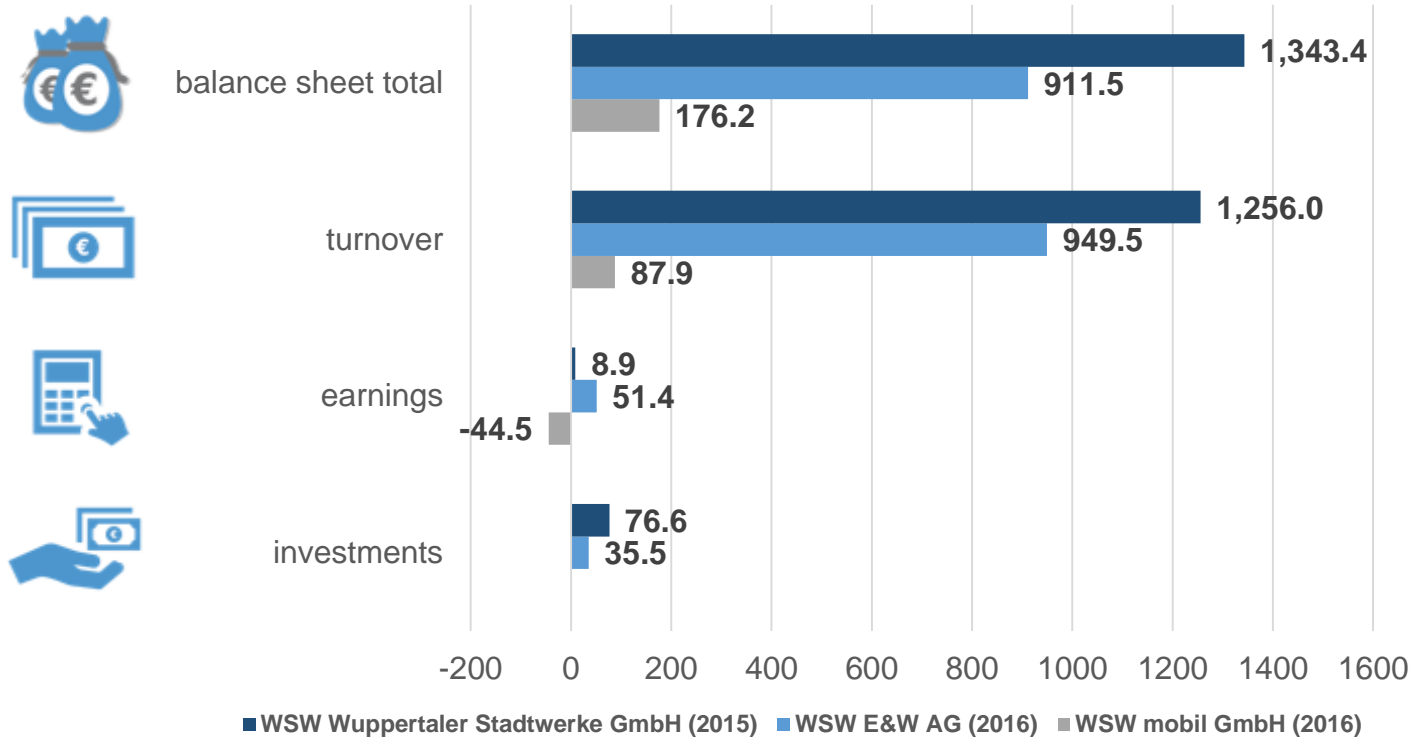
A decorative graphic at the bottom of the slide features a light blue, wavy shape on the left that transitions into a solid red circle on the right.

# WSW – what do we stand for?



# Performance of the WSW Group

Performance of the WSW Group (Mio. EUR)

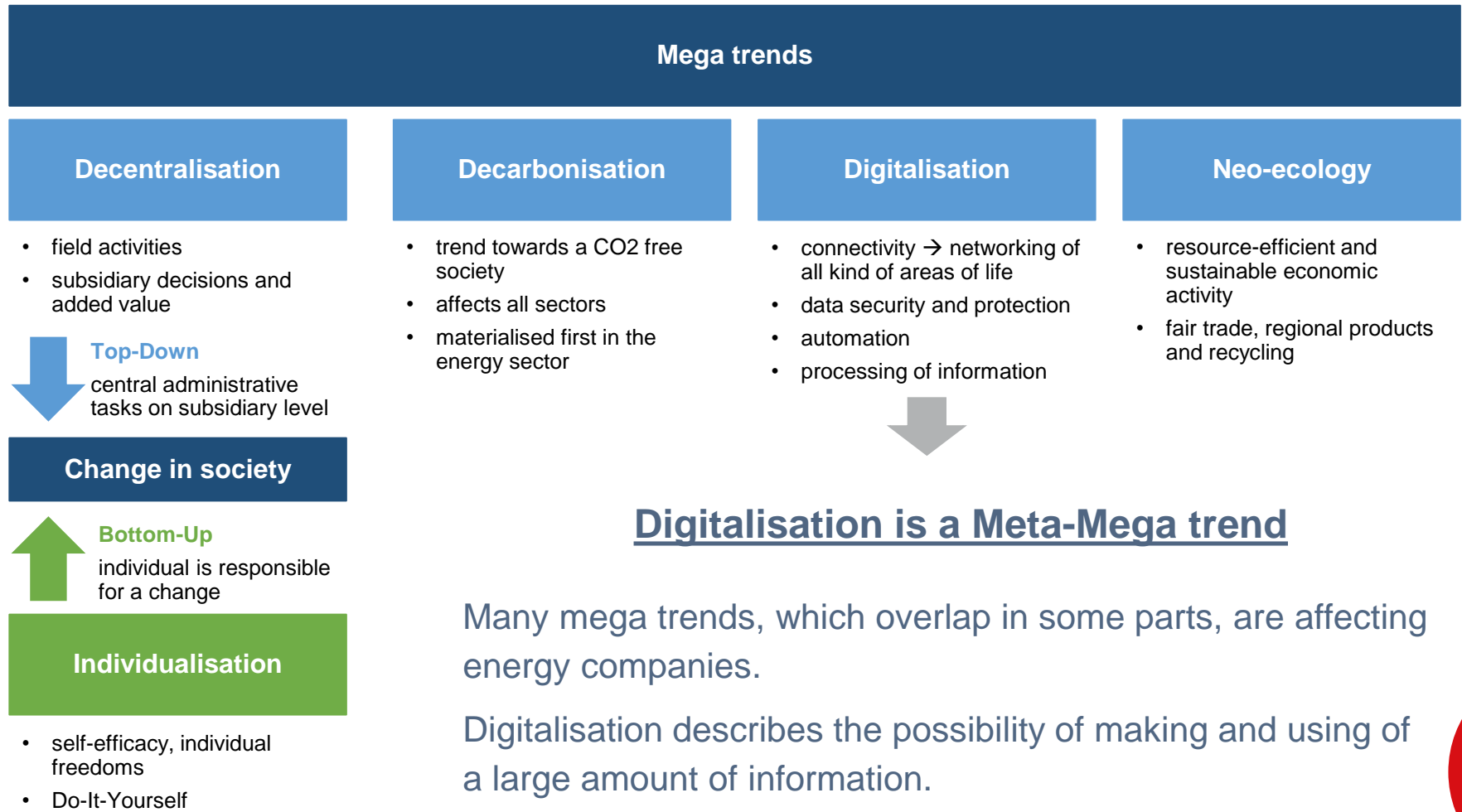


Employees: **3.270** (2016)



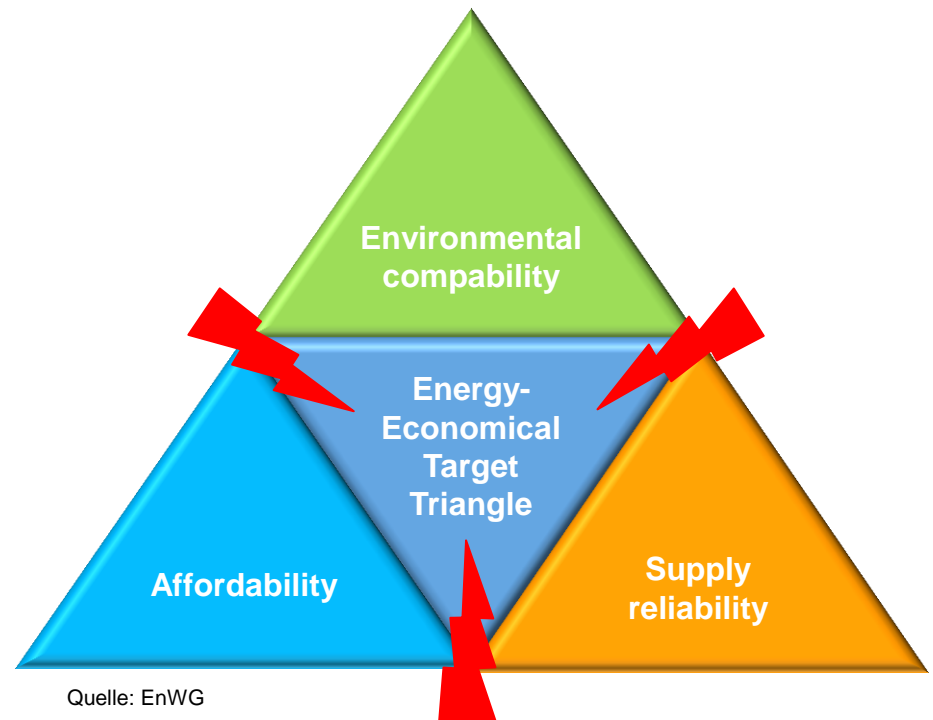
Number of passengers (Mio.): **90,1** (2016)

# Mega trends are describing the development of the whole society



## 2050 targets

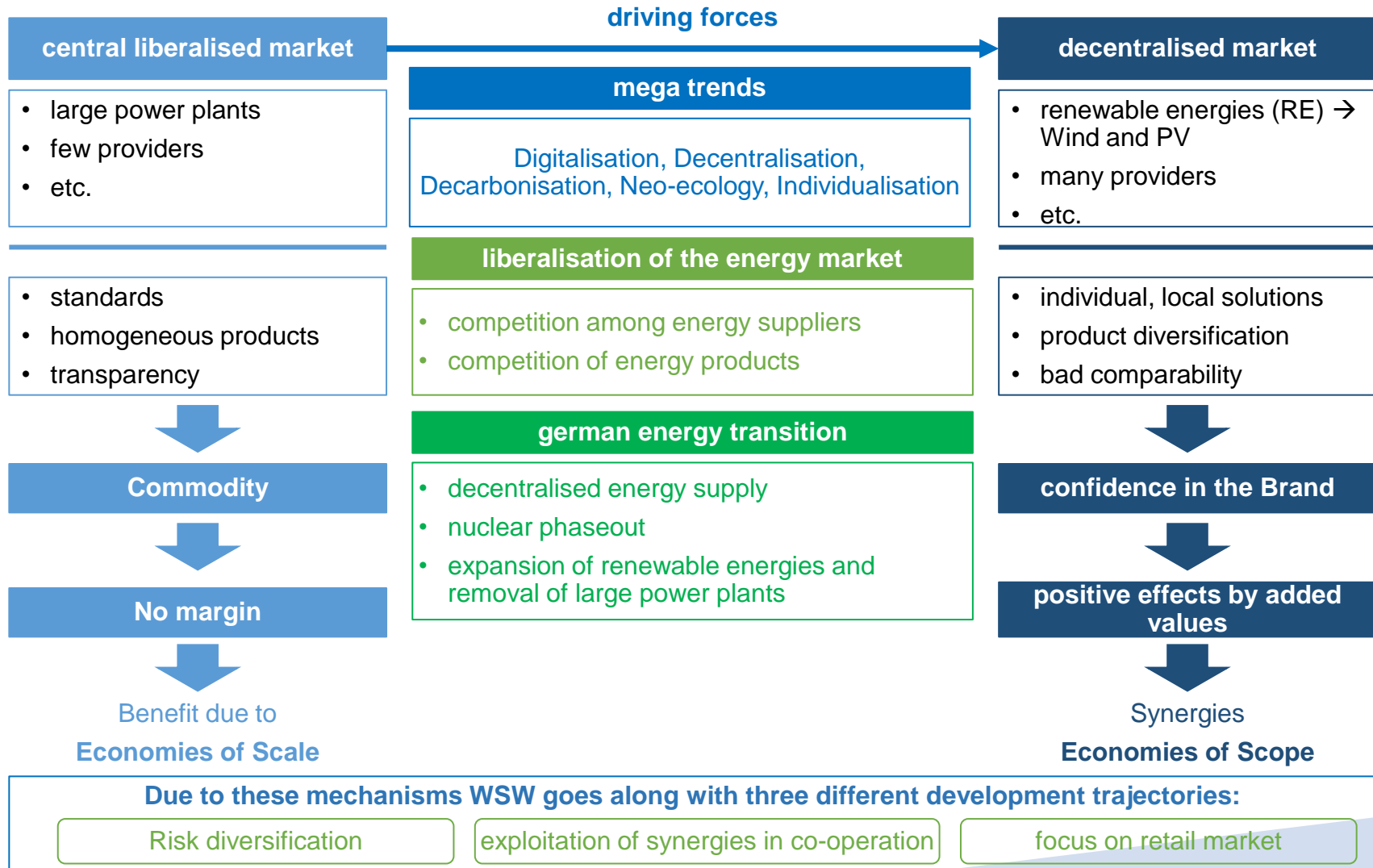
- Reduction of CO2 by 80-95%
- Increase the share of renewable energies to 80%
- Improve energy efficiency by 50%
- Reduction of gross electricity consumption by 50%



## Legal basis: Renewable Energy Act (EEG)

EEG 2014 Feed-in tariffs	EEG 2017 Auction model
<ul style="list-style-type: none"><li>Policy mechanism to accelerate investment in renewable energy technologies</li><li>Long-term contracts for renewable energy producers</li></ul>	<ul style="list-style-type: none"><li>Auction system for most renewable technologies</li><li>Aim: to keep a steady hand on the rise of renewable power</li></ul>

# Transition of the energy system in Germany



# Thank you for your attention

Sören Högel

WSW Energie & Wasser AG  
Head of strategy and development  
[soeren.hoegel@wsw-online.de](mailto:soeren.hoegel@wsw-online.de)

